



# Reduce Printing Costs with Word Print Wizard

## Printing costs are increasing

- Users are printing more documents than ever
- Too many single-sided prints when double-sided is available
- not using the most eco and £ friendly printers
- inability to print to letterhead and plain paper
- damaging to the enterprise's carbon footprint



## Word Print Wizard Solution

Word Print Wizard replaces Word's Print function and handles document printing, as follows:

- automatically prints to the cheapest and most appropriate printer for the document type
- handles letterhead and plain trays
- supports all printers via a simple data file
- logs printer usage and provides statistics
- tells the user the cost of the print job and suggests a more cost effective alternative

## Word Print Wizard Benefits

- significantly reduces printing costs by helping users to achieve the most cost-effective print
- users able to print letterhead, plain and PDF copies easily
- printer data file reduces the cost of support and maintenance of the printer stock and the implementation of new printers
- reduces the carbon footprint of the enterprise

## Word Print Wizard Costs

Costs are based on our daily development rate of £650. Word Print Wizard is supplied at a fixed cost for use across the whole enterprise. Source code is included. Word Print Wizard uses a data file in which all the enterprises printers are defined. CDEV will set up a sample set of printers and the client will take on the task of adding all their printers (or rather the printer categories). Word Print Wizard can have a number of additional functions as costed below.

### Main Word Print Wizard function

Item	Cost - days
Word Print Wizard	6
Onsite testing & setup	2
Meetings	1
Total days	9
<b>Total @ £650 per day</b>	<b>£5,850 (\$11,700)</b>

### Additional functions

Item	Cost - days
Eco draft printer tool	2
User printer statistics	3
User Guide	1
Self installing Setup.exe	1
Total days	7
<b>Total @ £650 per day</b>	<b>£4,550 (\$9,100)</b>

## Ongoing support

CDEV Computing can provide ongoing support, training and consultancy @ £650 per day plus expenses.

## Background to CDEV

At CDEV Computing we develop Microsoft Word templates and formatting and automation tools to solve Word problems and boost document productivity.

Contact us for a no-obligation fixed-cost quotation for a Word solution. We are very competitive on price. Our turn-around is measured in days rather than months.

## Terms and Conditions

- Solutions developed to agreed fixed cost
- includes 90 day support, ongoing support contract available
- solution code is completely provided

## Why CDEV

- with 12 years dedicated to Word solutions CDEV has unmatched experience
- over 100,000 users use CDEV's Word systems
- see [www.cdev.co.uk](http://www.cdev.co.uk) for the full story

## CDEV Clients

Coventry City Council • City of London • Microsoft • UCU Barclays • Audit Commission • RAC • Syngenta • Wiley APACS • HSBC • Norwich Union • BACS • Linklaters Vodafone • 10 Downing Street • Learning Skills Council

## CDEV Contact

Chris Devrell, Manager  
CDEV Computing Ltd  
11 Home Field Drive, Nursling, Southampton, SO16 0TH  
T +44 (0)23 8074 0990 Skype: chris.devrell  
E [chris@cdev.co.uk](mailto:chris@cdev.co.uk) [www.cdev.co.uk](http://www.cdev.co.uk)



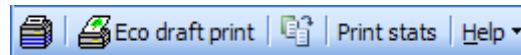
**CDEV Computing Ltd.**  
Microsoft Word templates | macros | solutions  
[www.cdev.co.uk](http://www.cdev.co.uk)



# Reduce Printing Costs with Word Print Wizard

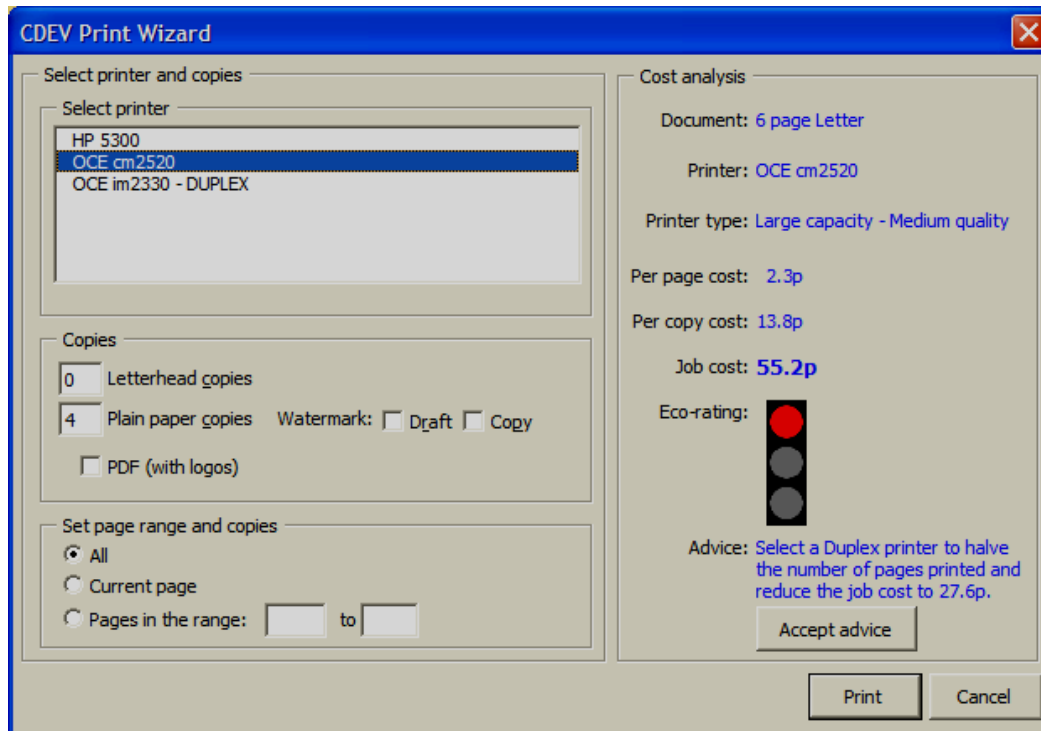
## Word Print Wizard

In Word the user prints a document in the normal way via File Print, or Ctrl+P or pressing the Print button on our custom quick-access print toolbar:



The Word Print Wizard is displayed.

User types and selects their required options and presses Print.



The print Stats dialog displays the users print log and costs

**Eco draft print** is a tool that reformats the current document into a form that prints to the minimum number of pages suitable for reading – usually a landscape 2-column reduced font format with no headers or footers. Shrink-to-fit makes a document that goes just over-page reduce to fit to the previous page

